

Applications

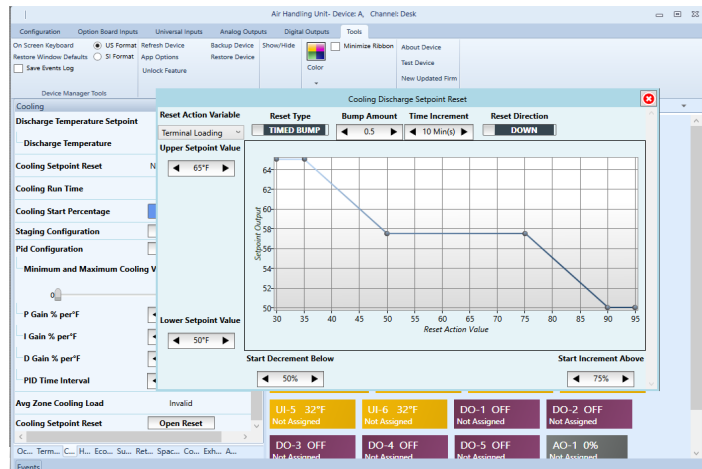
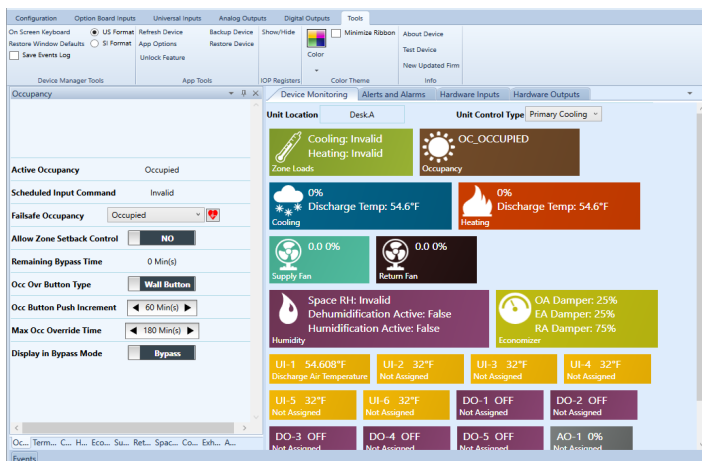
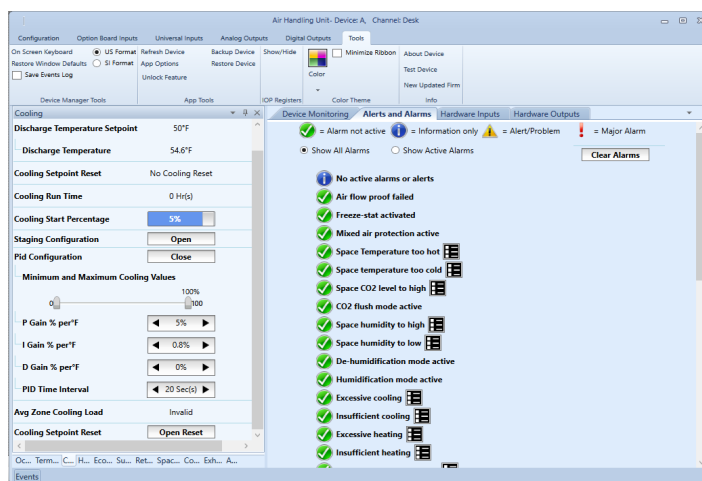
Application is compatible with Q1 Hardware. Compatible with Air Handling Unit equipment up to 6 stages of cooling or heating, analog or floating point valves or digital stages, discharge pressure/variable speed fan control, economizer, humidification and de-humidification, IAQ (CO2) control. Accepts fan in bindings from terminal equipment controllers to communicate zone information.

Software

Software features include:

- Single Zone or Terminal Unit based AHU control options
- Full PID control of up to 6 Independent stages of cooling, both digital and analog or a mixture of both
- Full PID control of up to 6 Independent stages of heating, both digital and analog or a mixture of both
- Multiple Supply Fan control options. On/Off, Duct Pressure Control, Temperature based Variable Speed
- Multiple Return Fan control options. Building Pressure control, Volumetric Tracking, Speed Tracking
- Multiple styles of built in Discharge Temperature and Fan Pressure Reset algorithms
- Dry-bulb and Enthalpy based Economizer with CO2 and freeze protection control
- Space Humidity Control
- Built in Energy Shedding control
- Built in Alarming
 - Air Filter Alarms
 - Fan Failure and Belt Loss Alarms
 - Sensor Alarms
 - Temperature Control Alarms
 - Pressure Control Alarms
 - CO2 Alarms
 - Many more
- Changeable network variable types.
- Slave mode for any unused I/O, which can be bound to another controller.

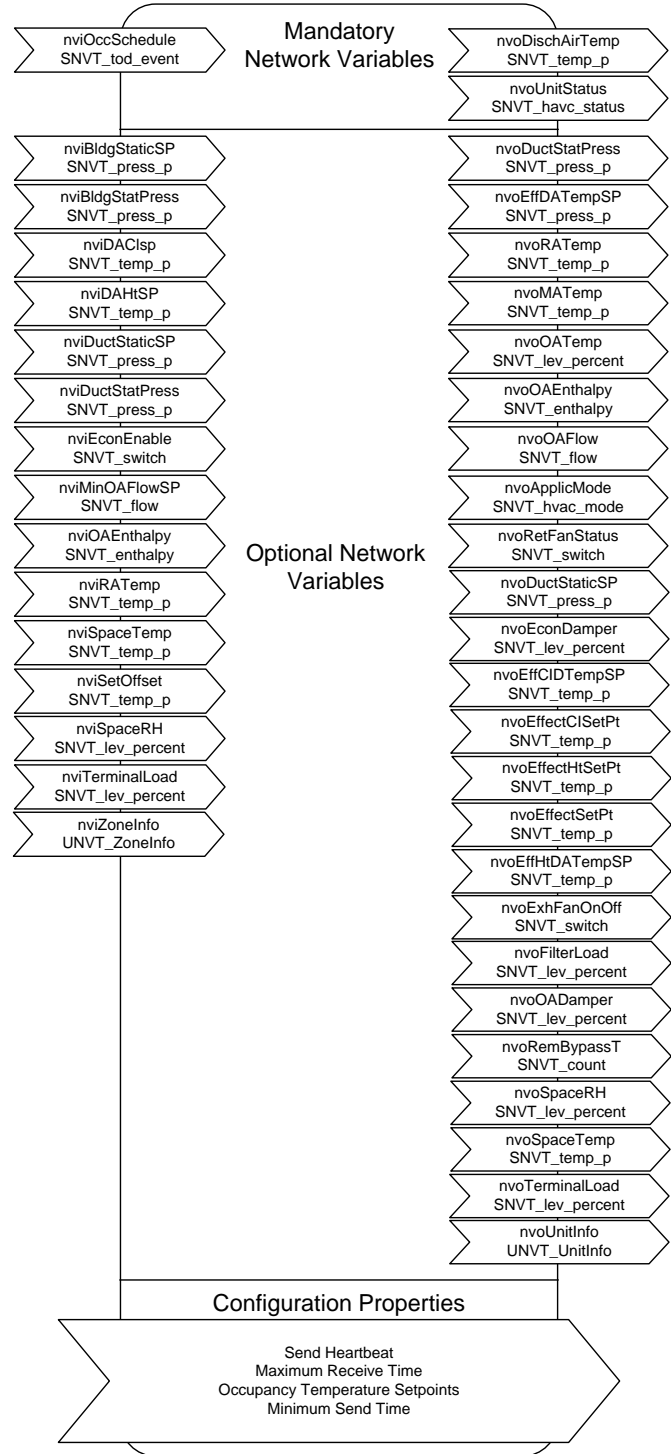
LNS Plug-in provides graphical user interface for configuration and monitoring. Plug-in simplifies hardware I/O customization, communication parameters, control sequences. Plug-in can be executed from-within network management tool such as LonMaker for Windows or similar.



AHU 8610 Profile

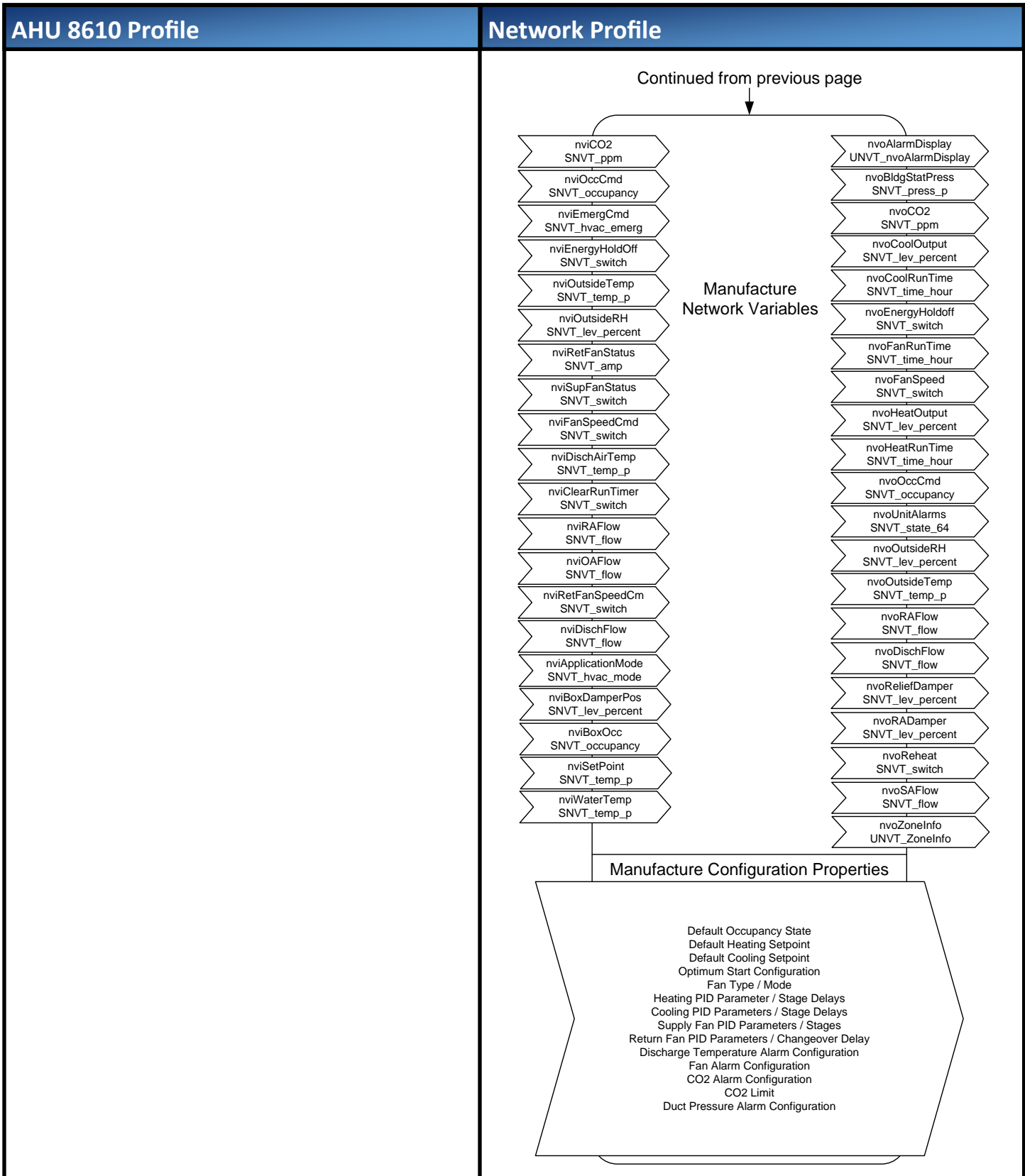
All variables with SNVT_xxx have Changeable Types feature.

Network Profile



Continue on next page





Open Loop Sensor Profile

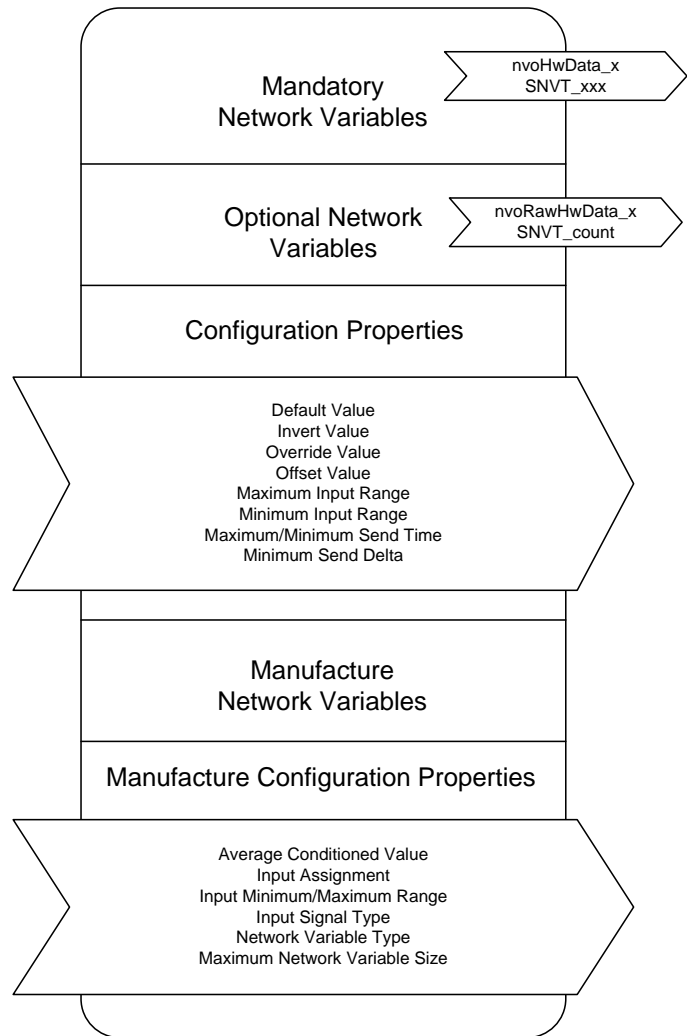
Open Loop Sensor profile is used by all physical inputs. Inputs can be used as slave I/O or as part of the main application.

All variables with SNVT_xxx have Changeable Types feature.

Network Profile

Open Loop Sensor functional block information.

(Physical inputs)



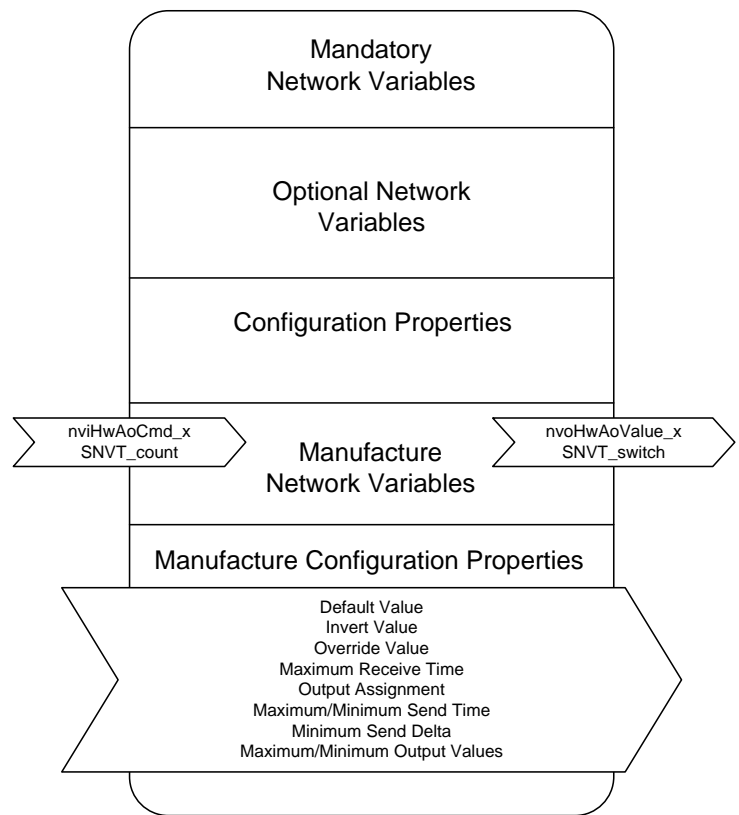
Open Loop Actuator Profile

Analog Output profile is used by all analog outputs. Outputs can be used as slave I/O or as part of the main application.

All variables with SNVT_xxx have Changeable Types feature

Network Profile

Analog Outputs functional block information.



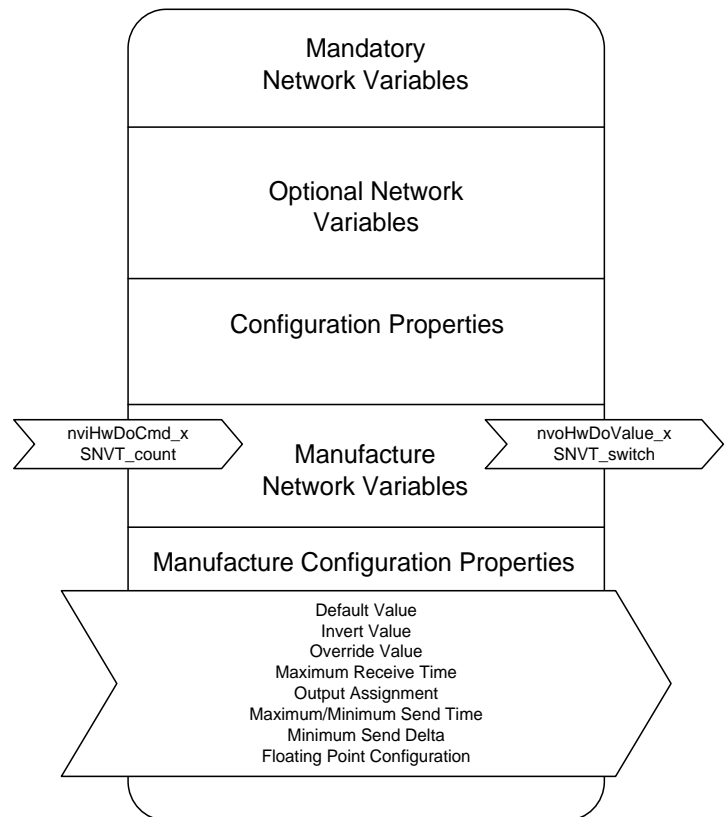
Open Loop Sensor Profile

Digital Output profile is used by all digital outputs. Outputs can be used as slave I/O or as part of the main application.

All variables with SNVT_xxx have Changeable Types feature.

Network Profile

Digital Outputs functional block information.



Node Object Profile

Node Object profile includes hardware specific network variables. The variables are for internal and use by the plugin only.

Network Profile

Node Object functional block information.

